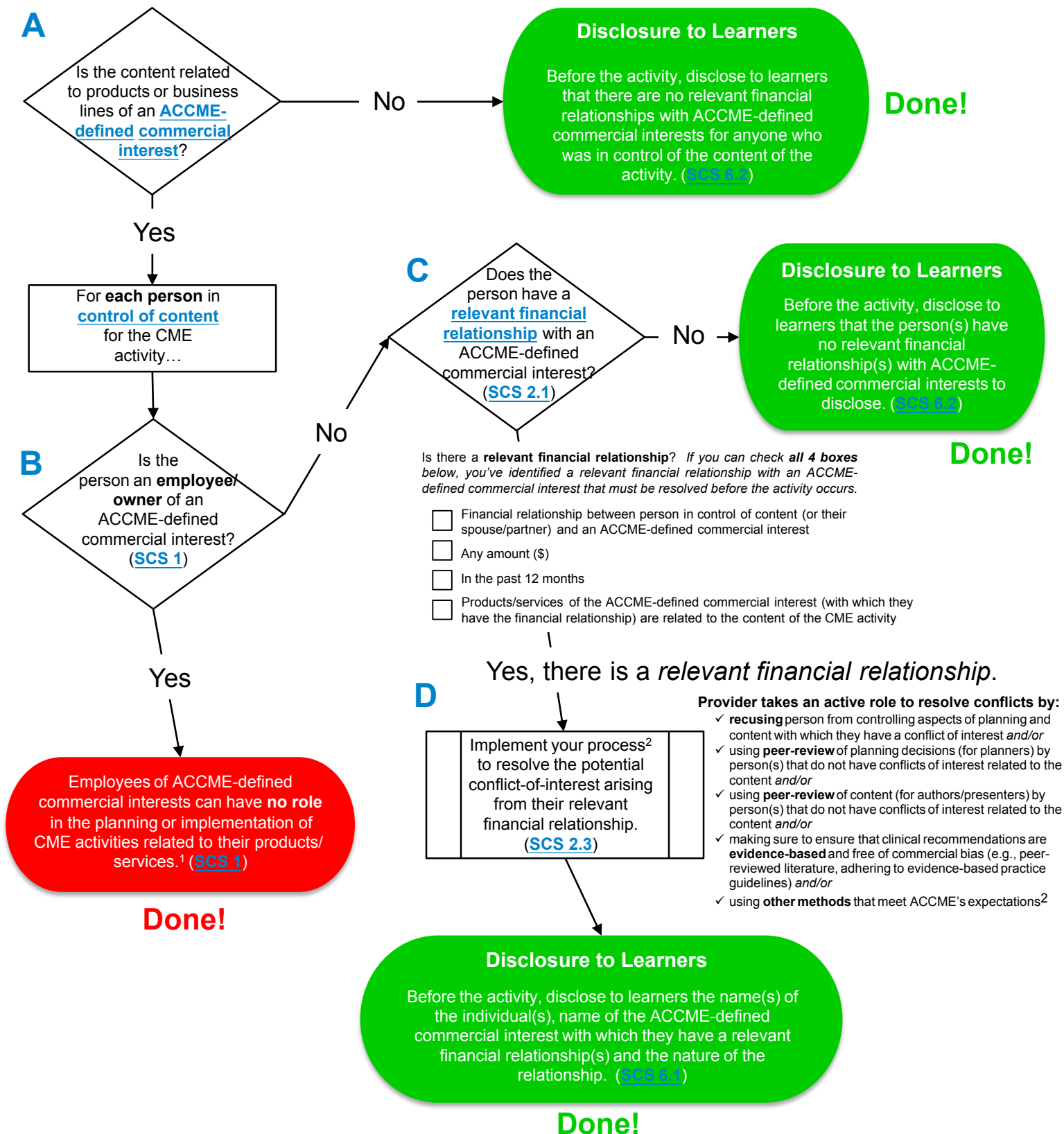




Flowchart for the Identification and Resolution of Personal Conflicts of Interest Meeting the Expectations of ACCME's Criterion 7

(Last updated : February 1, 2017)

Use this flowchart at the beginning of your planning process for CME activities to ensure independence from ACCME-defined commercial interests. **Start at A below.** For step-by-step instructions for using this flowchart, visit www.accme.org/tutorials/COI-flowchart.



Footnotes

1. The use of employees of ACCME-defined commercial interests as faculty and planners or in other roles where they are in a position to control the content of accredited CME is prohibited, except in specific situations. For more information, visit [this FAQ](#) regarding commercial employees.

2. There are a range of approaches providers can use to resolve potential conflicts of interests. For more information, visit ACCME's [Provider Examples of Compliance and Noncompliance](#) for Criterion 7 on www.accme.org.